

# Multistakeholder Advice Development

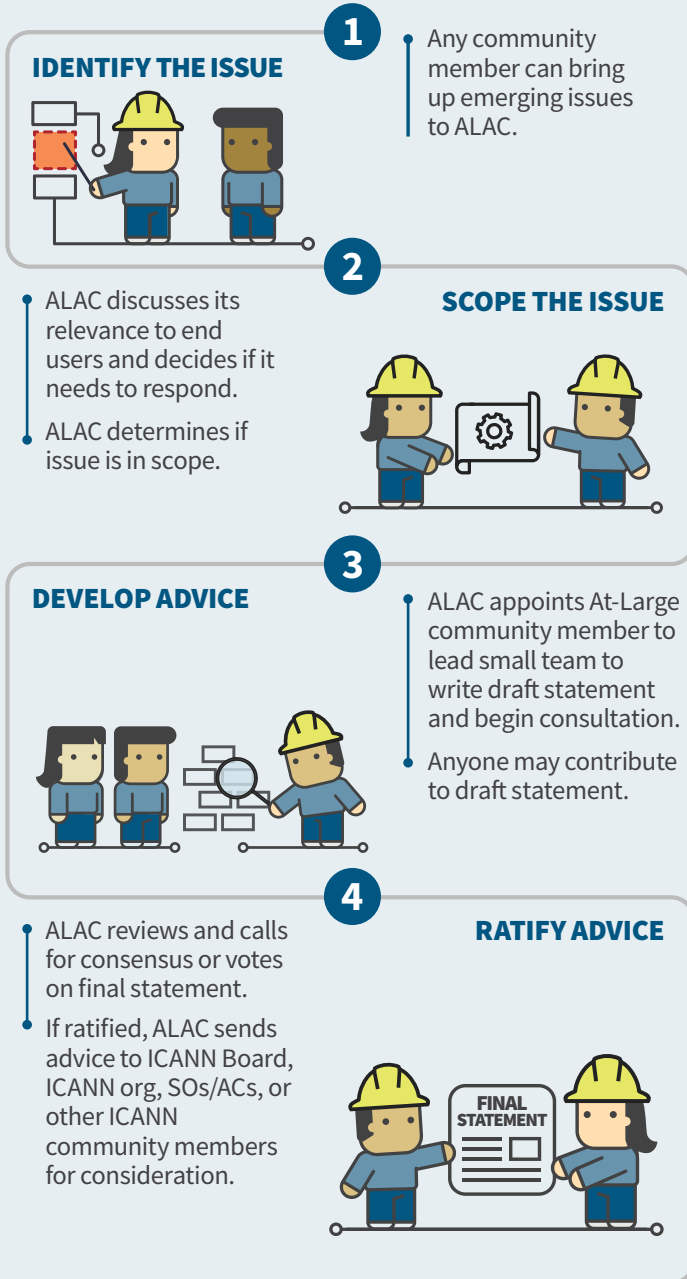
The Policy Development Support Team facilitates bottom-up, consensus-driven processes for advice on global gTLD, ccTLD, and IP address policies.



## At-Large Advisory Committee (ALAC)

ALAC voices interests of Internet end users and advises ICANN Board on policies within ICANN's mission and scope.

### ALAC Advice Development Process



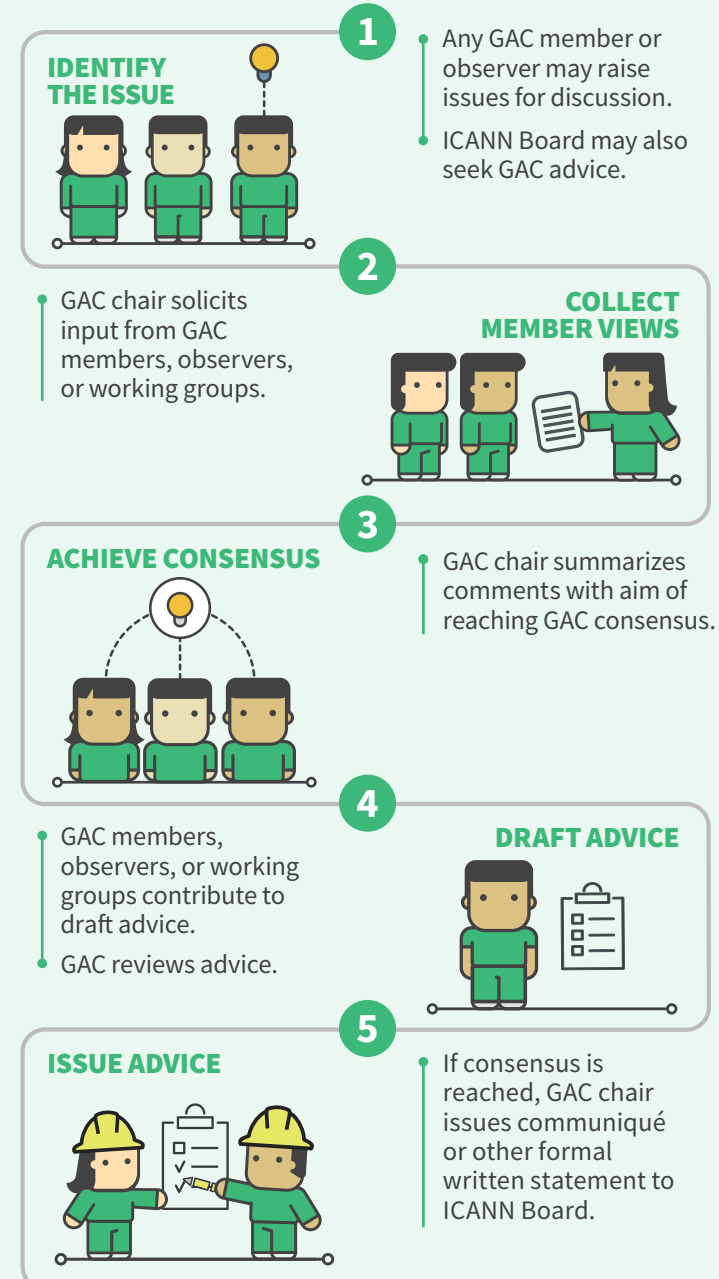
Learn more about the ALAC  
[alac.icann.org](http://alac.icann.org)



## Governmental Advisory Committee (GAC)

GAC advises ICANN Board on public policy issues, particularly in areas where ICANN policies intersect with national laws and international agreements.

### GAC Advice Development Process



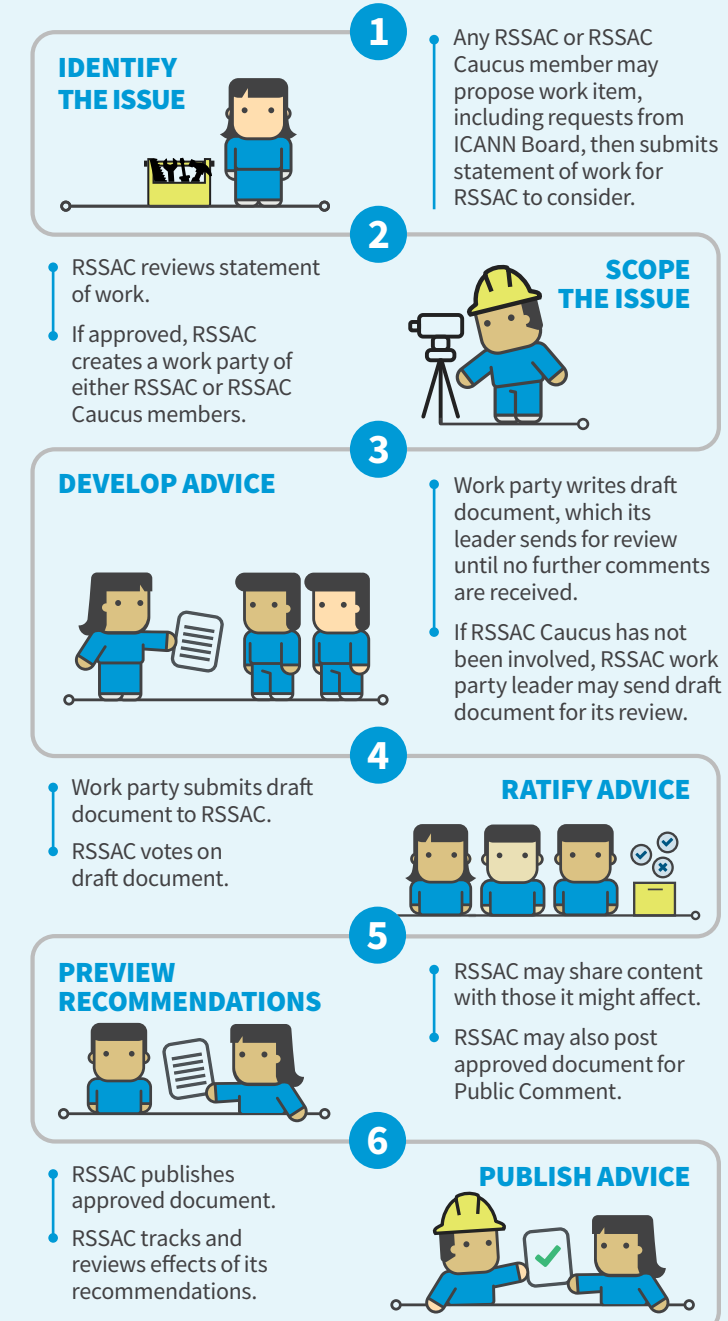
Learn more about the GAC  
[gac.icann.org](http://gac.icann.org)

ICANN | GAC  
Governmental Advisory Committee

## Root Server System Advisory Committee (RSSAC)

RSSAC advises ICANN Board and community on matters relating to the operation, administration, security, and integrity of the Internet's Root Server System.

### RSSAC Advice Development Process



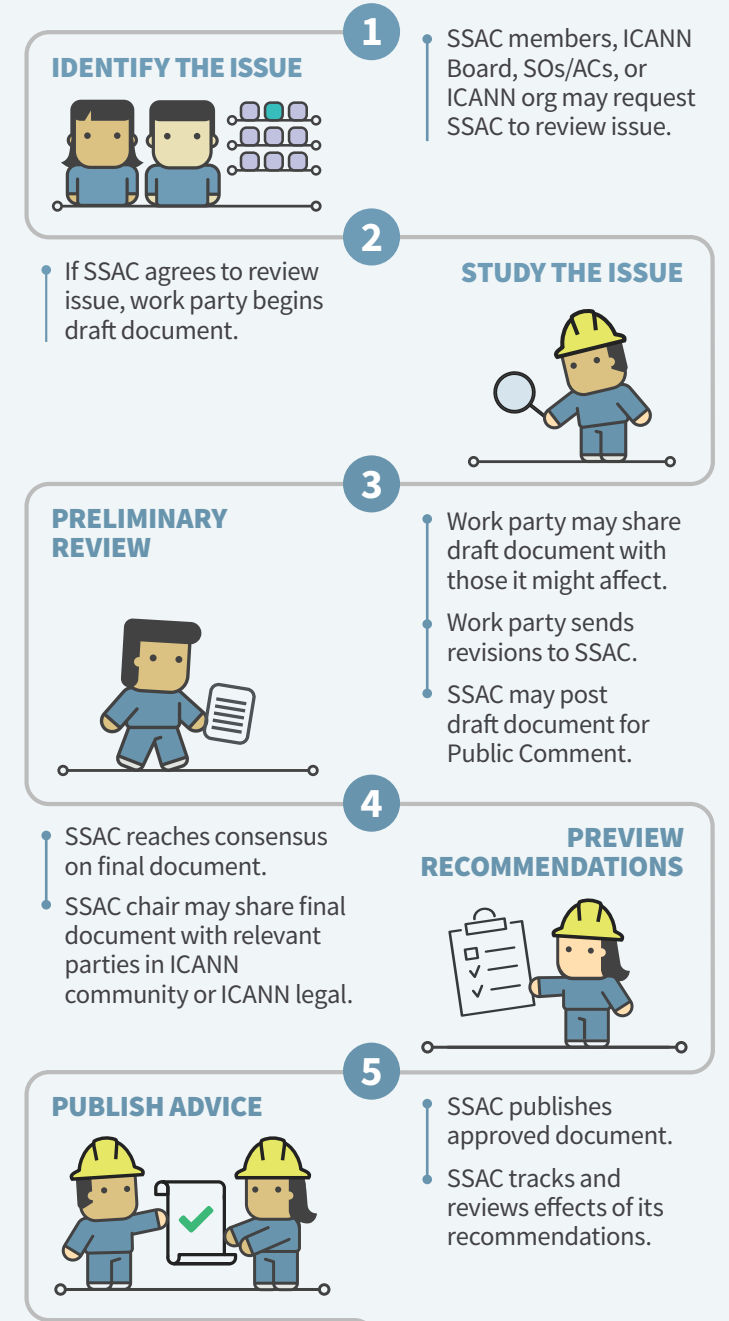
Learn more about the RSSAC  
[rssac.icann.org](http://rssac.icann.org)

ICANN | RSSAC  
Root Server System Advisory Committee

## Security and Stability Advisory Committee (SSAC)

SSAC advises ICANN Board and community on issues relating to the security and integrity of the Internet's naming and address allocation systems.

### SSAC Advice Development Process



Learn more about the SSAC  
[ssac.icann.org](http://ssac.icann.org)

ICANN | SSAC  
Security and Stability Advisory Committee

SO/AC Supporting Organizations/Advisory Committees