

Multistakeholder Advice Development

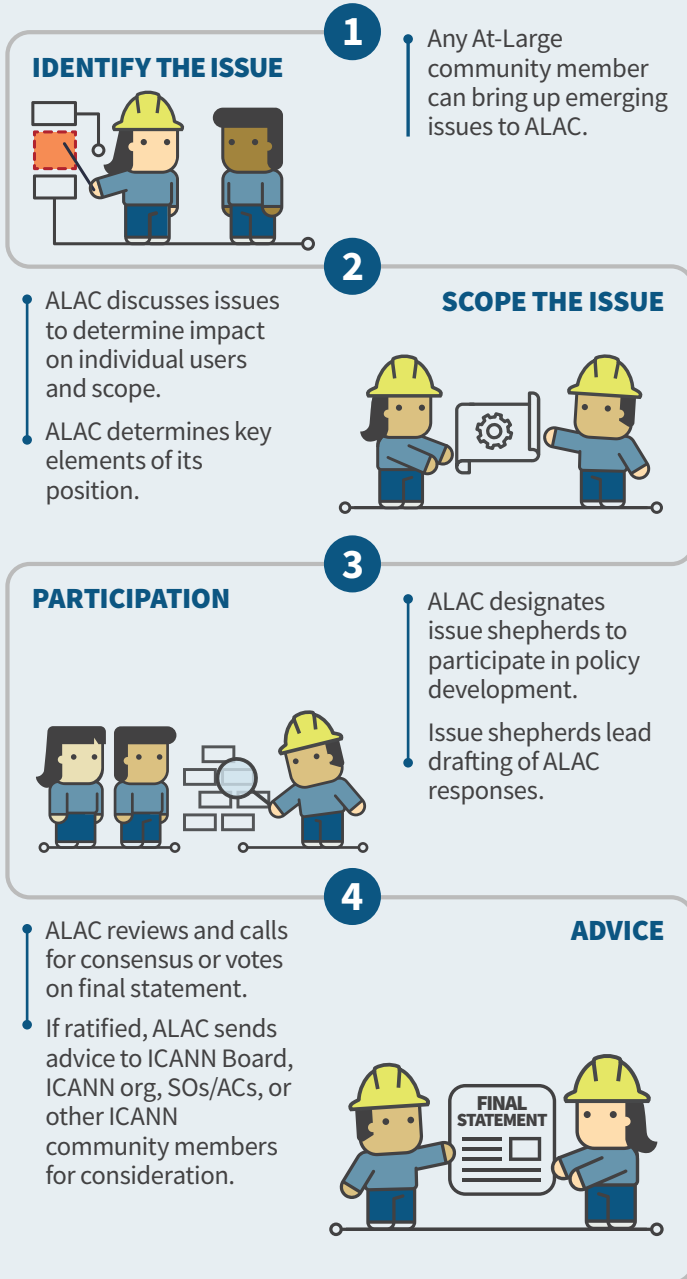
The Policy Development Support Team facilitates bottom-up, consensus-driven processes for advice on global gTLD, ccTLD, and IP address policies.



At-Large Advisory Committee (ALAC)

ALAC expresses the interests of individual Internet end users as part of policy development and in advice to the ICANN Board.

ALAC Advice Development Process



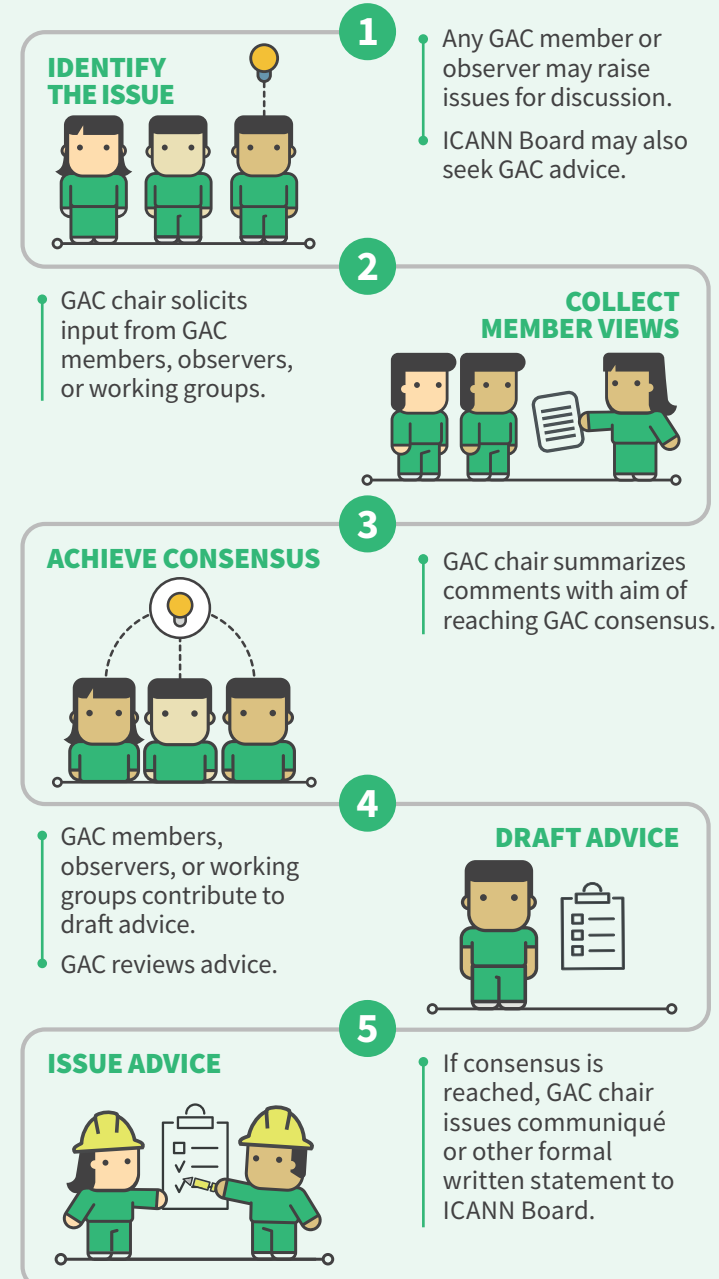
Learn more about the ALAC
alac.icann.org



Governmental Advisory Committee (GAC)

GAC advises ICANN Board on public policy issues, particularly in areas where ICANN policies intersect with national laws and international agreements.

GAC Advice Development Process



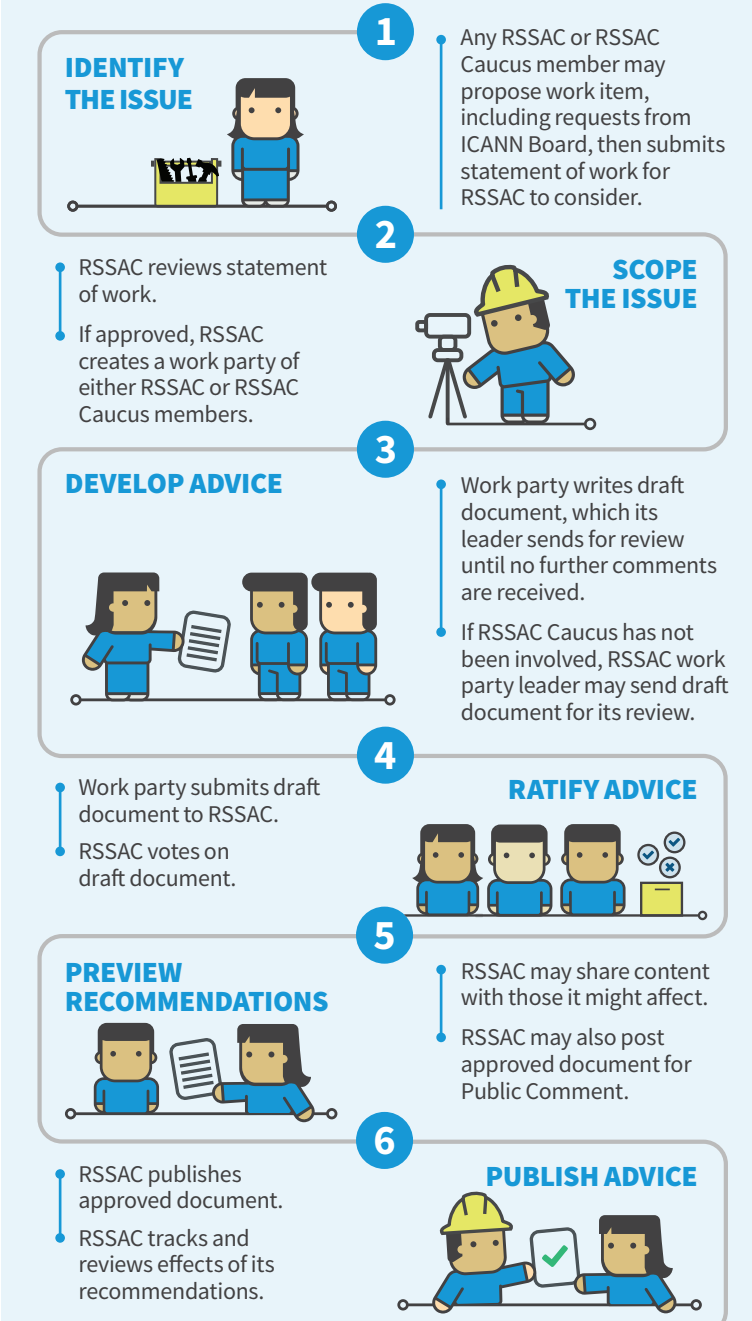
Learn more about the GAC
gac.icann.org

ICANN | GAC
Governmental Advisory Committee

Root Server System Advisory Committee (RSSAC)

RSSAC advises ICANN Board and community on matters relating to the operation, administration, security, and integrity of the Internet's Root Server System.

RSSAC Advice Development Process



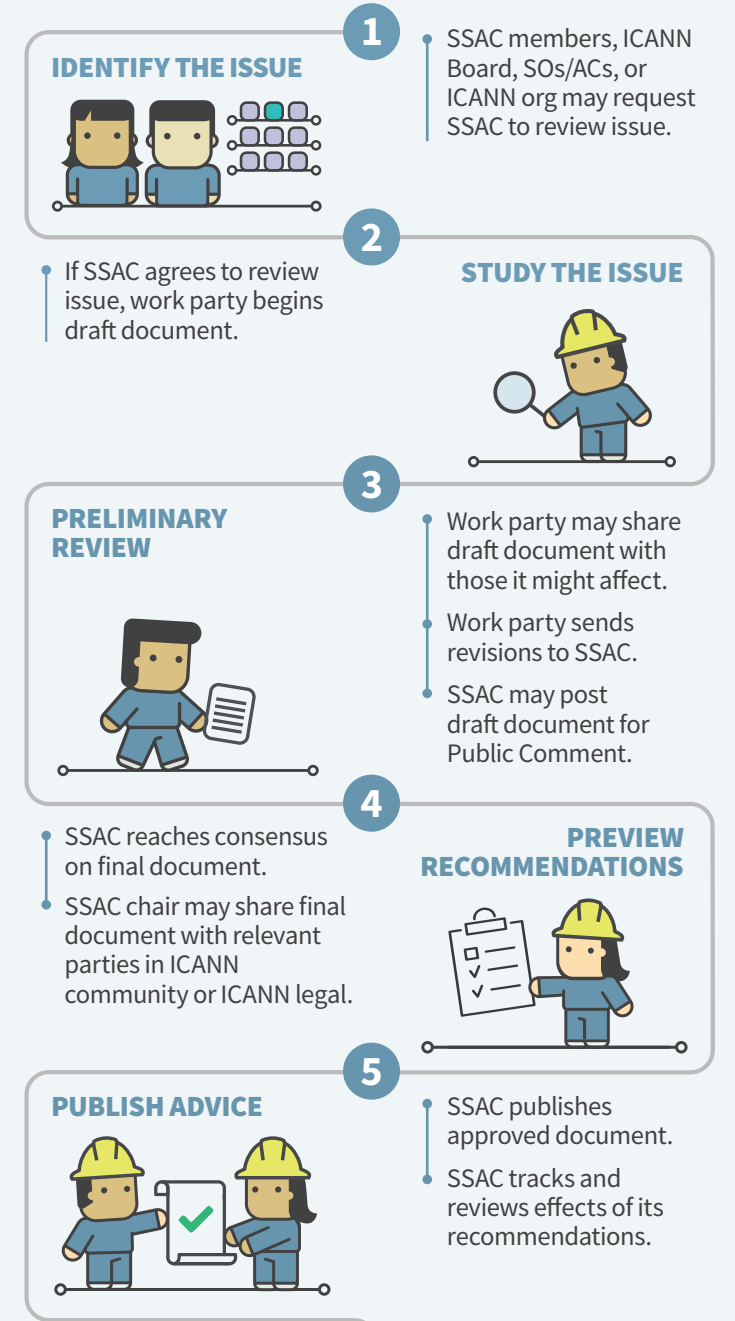
Learn more about the RSSAC
rssac.icann.org

ICANN | RSSAC
Root Server System Advisory Committee

Security and Stability Advisory Committee (SSAC)

SSAC advises ICANN Board and community on issues relating to the security and integrity of the Internet's naming and address allocation systems.

SSAC Advice Development Process



Learn more about the SSAC
ssac.icann.org

ICANN | SSAC
Security and Stability Advisory Committee

SO/AC Supporting Organizations/Advisory Committees